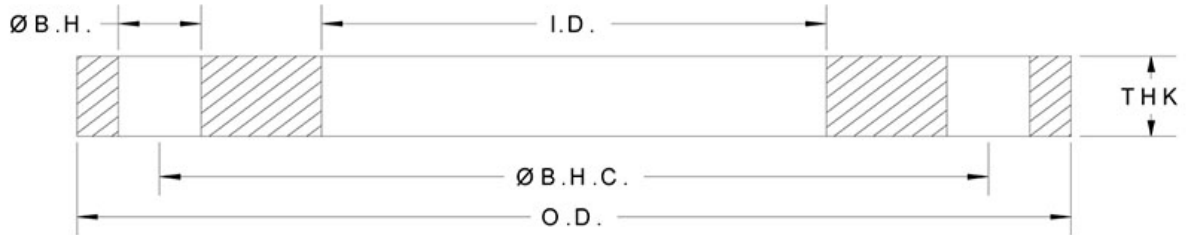




Carbon Steel 150# Plate Flange / Slip On

Submittal



Nominal Pipe Size	Outside Diameter	Inside Diameter	B.H.C. Diameter	Number of Bolt Holes	Thickness	Weight Lbs.	Part Number
1 1/2"	5"	1.95"	3.88"	4	.625"	3	CSPF0150
2"	6"	2.44"	4.75"	4	.625"	4	CSPF0200
2 1/2"	7"	2.94"	5.50"	4	.625"	5	CSPF0250
3"	7.5"	3.57"	6.00"	4	.625"	6	CSPF0300
4"	9"	4.57"	7.50"	8	.625"	8	CSPF0400
5"	10"	5.66"	8.50"	8	.750"	11	CSPF0500
6"	11"	6.72"	9.50"	8	.750"	12	CSPF0600
8"	13.5"	8.72"	11.75"	8	1.00"	22	CSPF0800
10"	16"	10.88"	14.25"	12	1.00"	27	CSPF1000
12"	19"	12.88"	17.00"	12	1.00"	41	CSPF1200

Job _____

Contractor _____

Engineer _____

Representative _____

Order No. _____ Date _____

Submitted by _____

Approved by _____ Date _____

Tag _____

287 S Santa Fe Drive
 Denver CO 80223-1842
 Phone (303) 698-9988
www.ThermoTechDenver.com

Carbon Steel 150# Plate Flange Slip On	
Drawn By: OBS	Date: 04/2016